



**PNEUMATIC
HYDRAULIC
ELECTRICAL
MECHANICAL**



PNEUMATIC
HYDRAULIC
ELECTRICAL
MECHANICAL
AUTOMATION



النهال للتجارة العامة ذ.م.م
al nihal gen. tr. llc

EQUIPMENTS FOR
INDUSTRIAL APPLICATION, WATER APPLICATION, OIL FIELD AND MARINE

ABOUT US

AL NIHAL GEN. TR. LLC, ISO 9001:2015 Company is a major supplier and stockiest for Pneumatic, Electrical, Mechanical, Plumbing and Hydraulic equipment's in Switchgear Applications, Industrial Automations, Water treatment plant, Oil Field, Marine and other Industrial equipment for the UAE, Middle East, Central Asia and East Africa.

Our Expertise :

Operating from our regional offices in UAE, We pride ourselves in providing with great support and services to the industries for complete range of highly qualified equipment, parts accessories and other engineering solutions.

With the attentiveness of our highly experienced staff, our innovative management and dedicated product knowledge in engineering & procurement sector put us to lead the industry, to meet customer demands and needs around the clock under 24/7 support & to emphasis our dedication and quality service.

As a diversified organisation with fast growth and well-resourced company, we strive for excellence in customer satisfaction and is a leader in supplying equipment and material to the industries. We at AL NIHAL have one Priority - "our customers and their complete satisfaction" We prove this by offering quick response times for customer inquiries, getting exactly what required with focused trust, honesty, integrity and service oriented attitude.

Our remarkable position in the market doesn't ends up only in providing the products, but also with a strong and on-going long term beneficial relationship with a number of respected local and international companies through-out the world helping you to achieve your main objectives of times, performance and cost effectiveness.



Depending on job specification, our SPACEWORKS Pneumatic cylinders basically of European Origin would be available at your door steps with reference to different size ranges in relation to the material, pressure, radius, area, force and stroke relationships.



Air Cylinders

Conforms to VDMA 24562 standards
Bore sizes : Ø32, 40, 50, 63, 80, 100 & 125 mm
125, 160, 200 & 250 mm



we offer Electro mechanically operated solenoid valves of which control critical flow of Air, Gas, Water, Oil and Steam in applications Spanning numerous industries. Our portfolio ranges in brass, stainless steel, High pressure valves including bases from two position on/off valves to flow control systems that impact thousands of users. These 3/2 way, 5/2 way and 5/3 way solenoid valves can handle most fluid control applications in all commercial and industrial environments. ATEX coils are interchangeable.



Rethinking and Reimagining for Angle Seat Valves ends up with the best solution in our SPACEWORKS equipment's with uncontrollable market evolution. They are evaluated and available for different media like Steam, Water etc with the use of pneumatic actuated piston, characterized by high flow rates and a high cycle life.



We offer huge range of high quality SPACEWORKS shock absorbers which are mechanical or hydraulic devices designed to absorb and damp shock impulses. These are highly tested quality products used in millions of industrial construction designs throughout the world.



Our SPACEWORKS Pneumatic grippers provide their motion and actuation by introducing compressed air in to a chamber



We represent SPACEWORKS that make a variety of styles of pneumatically operated mechanical valves with different sizes.



Compressed Air Service Unit



We have extensive selection of pneumatic hoses, Pneumatic tubes, air compressor hoses, air hose assemblies, ducting hoses, hose safety cables, PTFE Hose assemblies, material hose coupled assemblies, as well as gasoline, food, spray, steam material



PTFE TUBE

Pneumatic Fittings & Accessories



DIAPHRAGM PUMPS

Air Operated Diaphragm of HUGE PUMP from Turkey with their robust design commercially survives succeeding the markets in responding with Food Grade Hygienic Stainless Steel, Stainless Steel, Aluminum and Plastic bodies with higher efficiency gains.

HUGE PUMP



Intake/Discharge Size	: 3/4" to 3" (inch)
Fluid Discharge Pressure	: 7 bar
Main Body	: Hygienic Aodd, Stainless Steel, Plastic & Aluminium
Diaphragms	: Santoprene, Neoprene, Buna-N, EPDM, PTFE, Viton
Ball Valves	: Santoprene, Neoprene, Buna-N, EPDM, PTFE, Viton
Ball Seats	: Santoprene, Neoprene, Buna-N, EPDM, PTFE, Viton
Air Inlet Size	: 1/4" - 3/4" (inch)
Solids - Handling	: 6mm
Suction Depth	: 1m - 6m
Operating Pressure Max	: 7bar



SUCTION CUPS & VACCUM GENERATORS

With very high competition in Industrial sectors, Vacuum Generators and Suction Cups provide solution in handling the products efficiently.

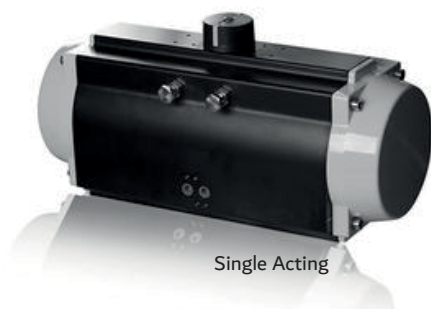
We provide solutions with the availability of wide ranges as per the application having Partnership with VUOTOTECNICA-Italy.



PNEUMATIC

ACTUATOR, VALVES & LIMIT SWITCHES

Our product line includes Valves with Rotary Actuators-Single Acting, Double Acting, Brass, Stainless Steel Valves with rotary actuators, limit switch boxes in Aluminum.



Single Acting



Double Acting

HAFFNER VALVES

Haffner valves has made a remarkable position in the market. Our products are not only used in general automation or the machine building industries, but also in applications throughout the car, truck, railway and process industries. Our customers enjoy the use of the valves because of their outstanding reliability offered at an extraordinary price/value ratio.



PARKER INDICATOR

PXV-series visual indicators give an immediate and clear information about pressure actuation. Available in Ø22mm and Ø30mm sizes, with a large choice of colours.



FUEL TANKER PANEL BOARD

We also assemble control panels as per the customers demand.





PNEUMATIC VIBRATORS

Amongst the leading brands in the market, find your required type of turbine vibrators, concrete vibrators, rail car vibrators, industrial vibrators, linear vibrators, shutter vibrators, roller vibrators, tank vibrators and piston vibrators which comes in many sorts of shapes and sizes with its own specific vibration characteristics.

AUTO DRAIN

JORC Auto drains are used to replace the manual drains that are normally standard equipment on compressor tanks. Typically, MAGY is installed in refrigerated dryers and under piston compressors.



INLINE FILTERS

Specialized with Gas and liquid filtration components, our comprehensive company offers you with efficient and qualified filters in durable packing materials. Our products range includes water separators, Air Filters, Inline Filters, Micron Filter, Nano Filter, UF Filter, Hydraulic Filter, Ceramic Filter, Pleated Membrane Filter and Stainless Steel Filters.



HIGH PRESSURE REGULATOR

We supply high pressure regulators with low cost, dependable regulators to reduce inlet pressures available in various styles and pressure range 0 to 35 bar



2/2 WAY VALVE / ATEX COIL

We also supply Brass, Stainless Steel 2/2 way with normal and ATEX coils.



PULSE VALVE & DIAPHRAGM KIT

We supply the Valves and Repair Kits in various sizes.



PINCH VALVE

The working Pinch Valve Mechanism. Having the simplest valve design in Stainless Steel and Alloy grade materials.



HIGH PRECISION REGULATOR

Our multistage pressure control regulators provide the highest level of regulation accuracy and repeatability available and is ideal for applications that call for the utmost in control and maximum stability under variable operating conditions.



PNEUMATIC

PRESSURE RELIEF VALVE

Pressure Relief Valve (PRV) is a type of safety valve used to control or limit the pressure in a system. Our easy to maintain safety and pressure vacuum relief valves that prevent over pressure and ensure downstream equipment protection.



ROD LESS CYLINDER

Rodless Cylinders are linear devices that use pressurized fluid to move a load within power transfer operations. These can be used if the footprint of the area is small, when the load needs to be moved some distance from the cylinder itself, and when the load must move within the length of the cylinder.



AIR BELLOW

Air Bellows (Anti-Vibration System) with a vision on pneumatics and motion-controlled products, Air bellows became a product of choice. Its flexibility, sustainability, easy & compact installation with various sized diameter ranges in Single, Double and Triple (1step, 2step and 3step) convolutions akes them used in industrial application, Automation industries, Automobile (RTA), etc.





GAS SPRINGS & DUMPERS

A distinctive approach towards many successful industries in Automation, Medical Technology, Aviation Industry, Furniture manufacturing and many other sectors enables us in providing corrosion resistant, anti-vibrant gas springs.

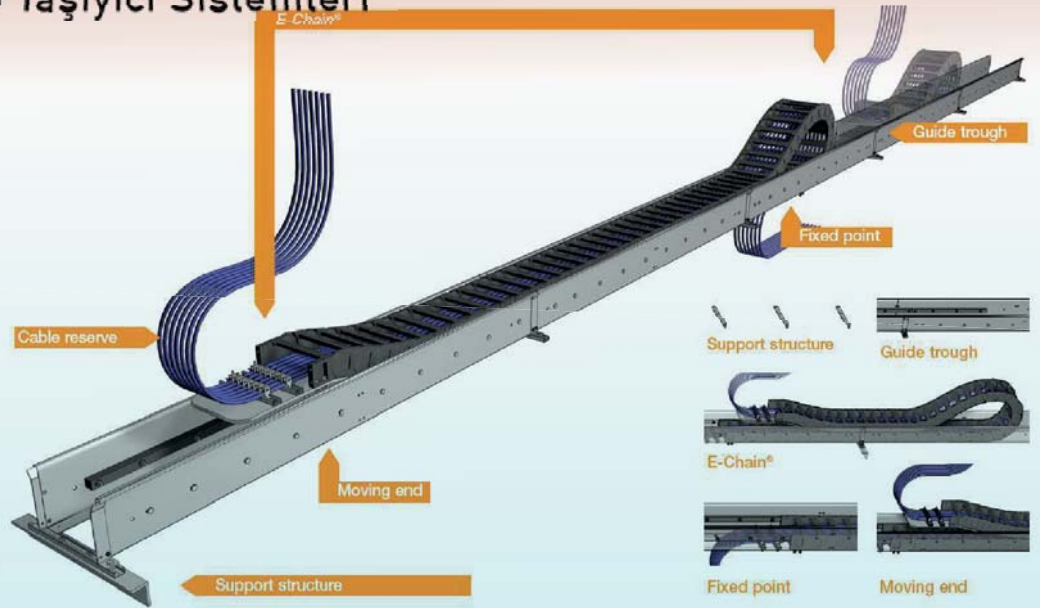
Our size rating capability with high performance abilities makes us unique in offering Stainless Steel Gas spring products and the varying designs ensures you with better performance, quality and reliability.

MECHANICAL



ENERGY CHAINS

E-Chain (Energy Chain) also called Cable Drag Chain system enhances to protect house moving cable operations with continuous flexible movement, easy insertion and cost effective solution. Our varied size ranges in Plastic, Aluminum and Steel materials, with appropriate suitability, which optimizes you with a perfect application.



PIPES

FITTING

FLANGES

VALVES

Our unique and standard Super Duplex, Duplex, Stainless Steel, Carbon Steel and DI grade pipes provide complete and comprehensive solution for the customers in the commercial and Industrial sectors ranging in various sizes. The pipe fittings are even maintained with the same grades to make the whole systems strong and compatible including valves, Flanges, Elbows, Unions, Weldolets and many more which are firmly fitted to the pipes avoiding leaks, which satisfies various requirements.

MECHANICAL



SPECIAL FASTENER

Special wide range of industrial fasteners grade includes Super Duplex, Duplex and Stainless-Steel working to international standards and specifications. These include Bolts, Nuts, Screws, Washers, Stud Bars, Anchor Bolts, Solid Rods and special fabricated Fasteners as per customer demands.



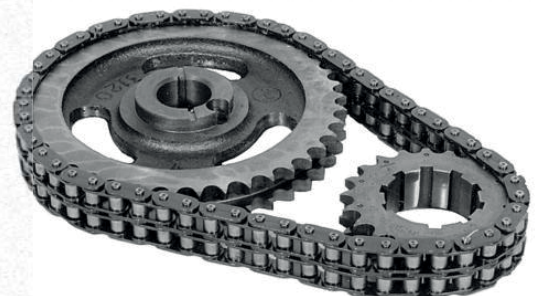
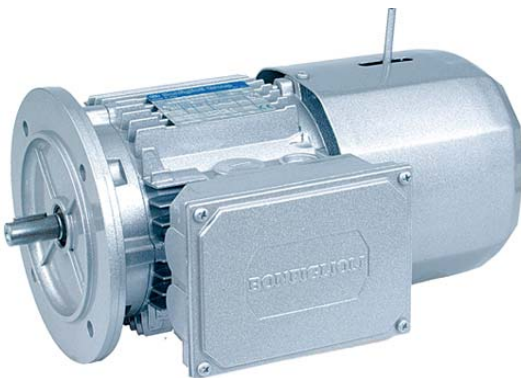
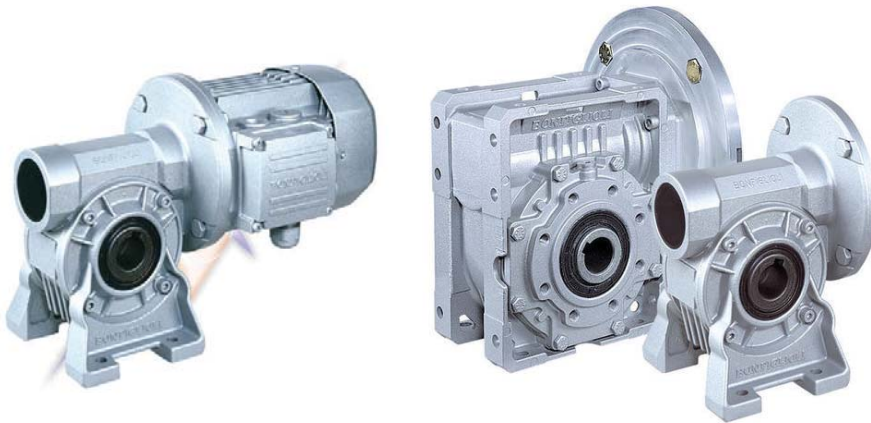
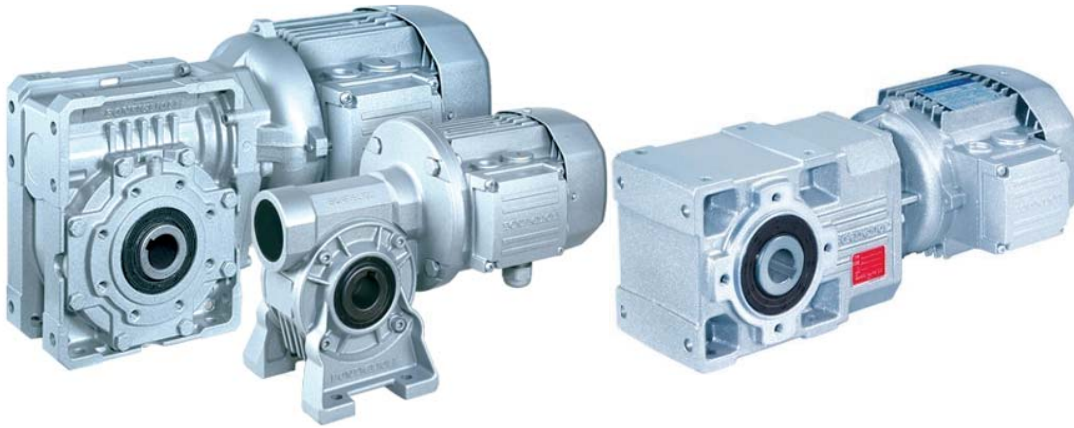
We do deal with Bonfiglioli, complete range of Motors, Gear Box, Mechanical speed Variators, Coupling Chains & Sprockets and Pulley for industrial automation applications.

GEAR BOX & MOTORS

COUPLING

CHAINS & SPROCKETS

PULLEY



SENSOR & REFLECTORS

TEMPERATURE CONTROLLER

THERMOCOUPLE

SSR

Our Engineered Industrial Sensors, SSR, Thermocouples, Temperature Controller, Reflector & etc., gives optimal solutions for even special and unique requirements in various applications like automation, process control appliances & HVAC markets. To comply with European and other international standards, we provide you with FOTEK, SICK, AUTONICS, OMRAN, BALLUFF, DATALOGIC and IFM brands for higher performance, productivity and efficiency in your application.



CURRENT TRANSFORMER

AMMETER / VOLTMETER

POWER ANALYZER

ELECTRICAL ACCESSORIES

We stock a comprehensive range of measuring instruments in KLEMSAN, ZIEGLER, RISHABH and ELMEASURE branded :

Current Transformers with CT class ranges 0.2, 0.2s, 0.5, 1.

Ammeters & Voltmeters in analog and digital with sizes 72x72 and 96 x 96mm

Digital Poweranalyzers Kilo Watt Hour Meter Frequency Meters for installation where reliability, accuracy and quality are required.



HYDRAULIC VALVES

MANIFOLD VALVES

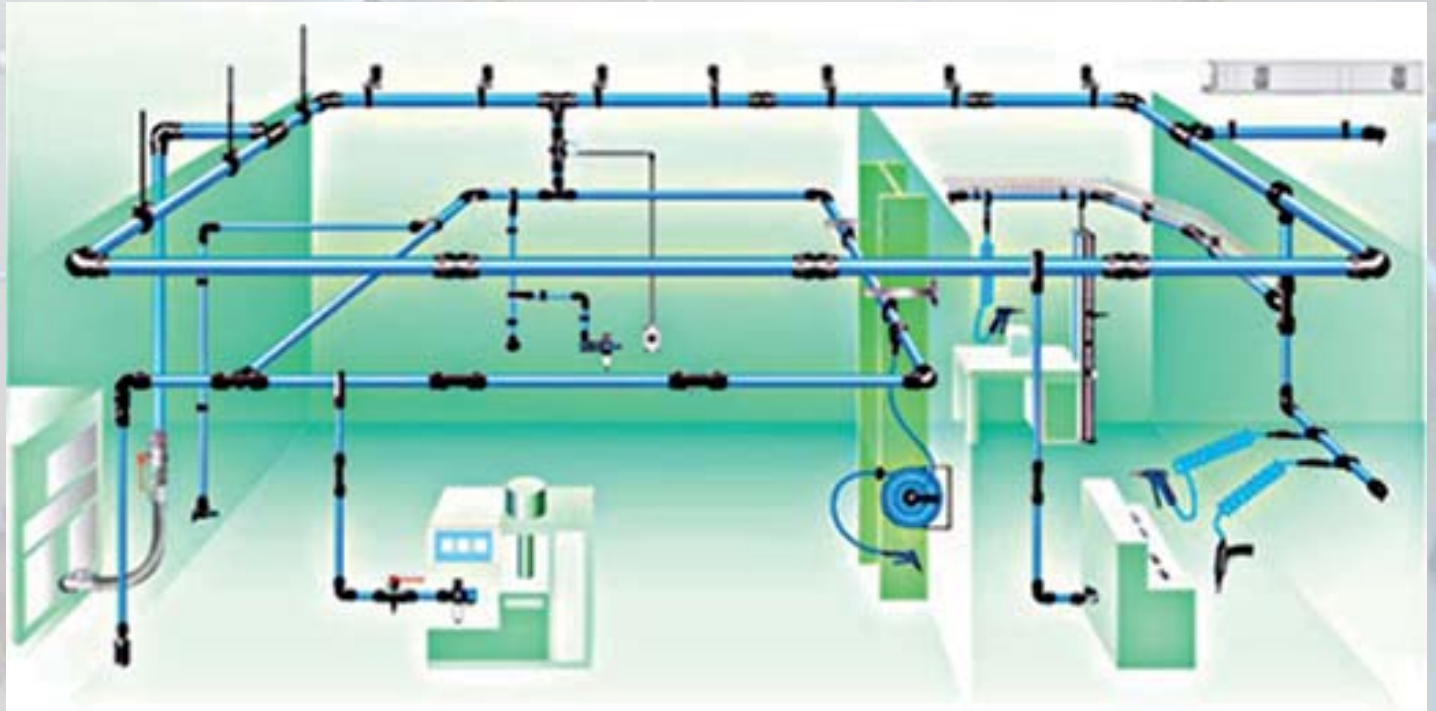
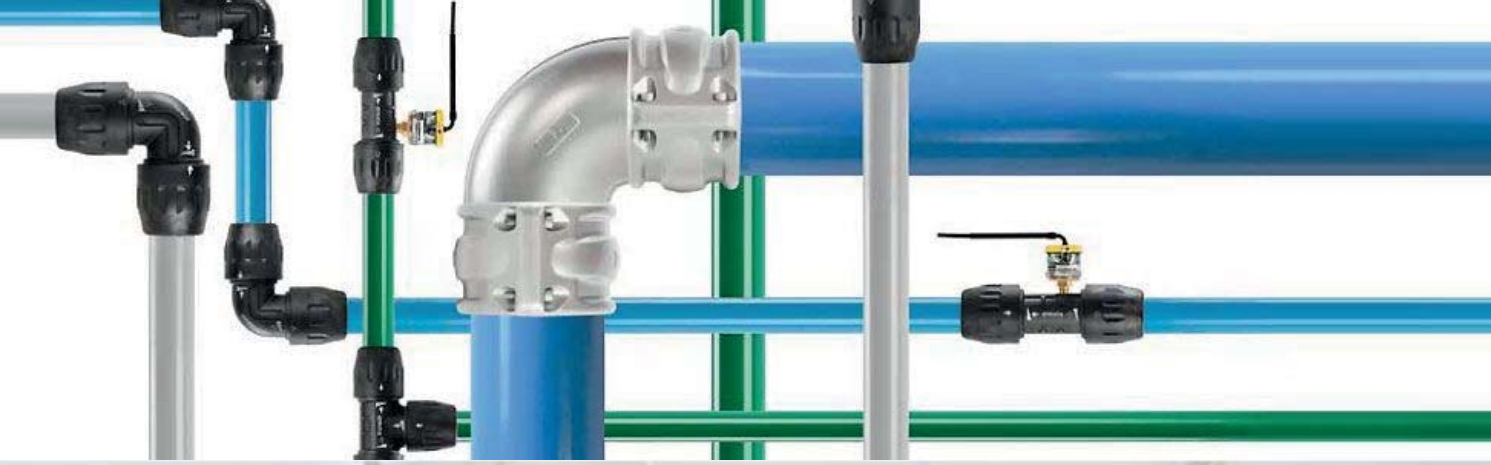
HYDRAULIC PUMPS

HYDRAULIC FILTERS

Hydraulic Solenoid valve, a kind of basic automation component for flow control is used to control direction of flow. Our team of application engineers and manufacturers consistently challenge hydraulic cartridge valve standards, achieving the most efficient and flexible designs. Our portfolio includes on-off solenoid, proportional solenoid and other solenoid for particular applications.

HYDRAULIC





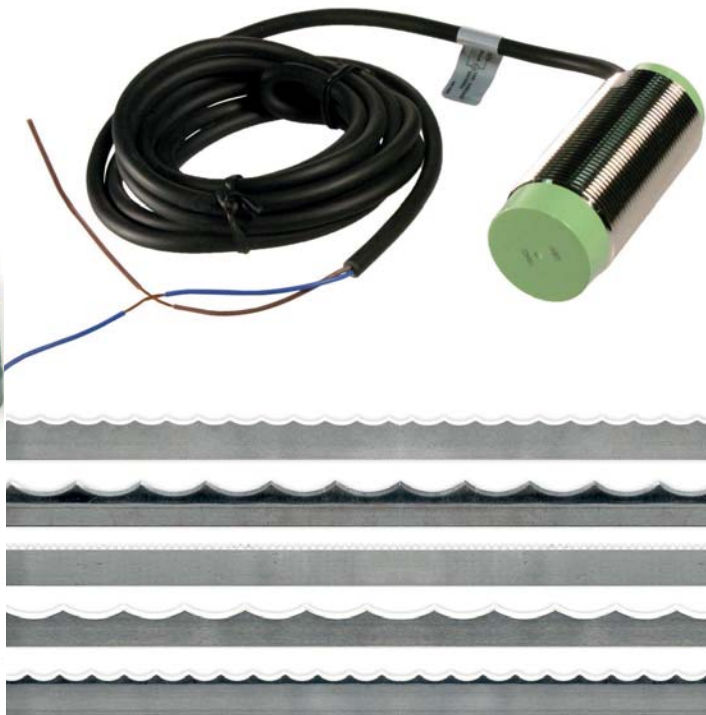
AIR COMPRESSOR PIPE & FITTING

Aluminum pipe and connectors are the perfect choice for compressed air, vacuum and inert gas systems and applications.



BAKERY MAINTENANCE EQUIPMENT

We supply and undertake the bakery machinery maintenance related equipments which are like Cutting Blades, Nozzles, Pillow Block, Pneumatic Cylinders, Solenoid Valves, Gas regulators, high temperature grease, CR30-15AO, CR30-15DP Sensors, Danfoss and Siemens Relays and Burners and etc.



INDUSTRIES AND APPLICATIONS

STAINLESS STEEL CHAINS

Suitable for handling: new glass and returnable glass containers, kegs, crates.

INDUSTRIES

Bottling and canning
Food filling
Glass manufacturing
Consumer goods

APPLICATIONS

Depallettizer
Inliner / combiner
Mass conveyors
Accumulation tables
Infeed / outfeed packaging machines
Packaged product convey



CARBON STEEL CHAINS

Suitable for handling: new glass & metal containers, abrasive components.

INDUSTRIES

Glass manufacturing
Automotive / Mechanical

APPLICATIONS

Inliner / combiner
Mass conveyors
Accumulation tables
Pallettizer



FEATURES

- Premium surface finishing and flatness.
- PRIMA material available (REGINA Cr-Ni based SS special alloy) with improved wear resistance and sliding properties, suitable for high speed bottling lines.
- Hardened pin available (PHD series) for the highest resistance to chain elongation over a long period of time.

Application conditions

Product conveyed: glass returnable

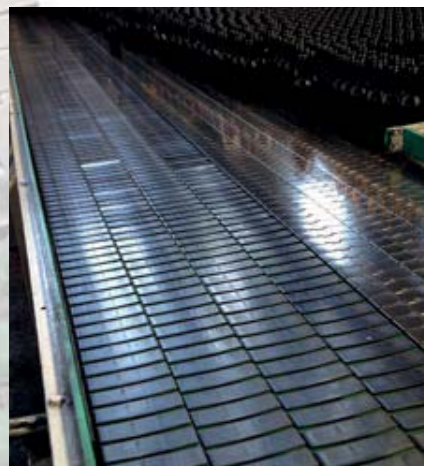
Test area: uncaser

Dirty environment

Lubrication: water and soap

Conveyor length: 5 mt

Chain speed: 21 m/1' (60.000 b/h)



SPACE PNEUMATIC
EQUIPMENT WORKS

HUGE PUMP

CKKS
Kablo Taşıyıcı Sistemleri

FOTEK

FOTEK
CONTROLS

Parker

NEWTONE
Gas Springs

Autonics
Sensors & Controllers

SICK
Sensor Intelligence.

SMC

JORC



VUOTOTECNICA
vacuum technology



Bonfiglioli
Forever Forward



FineTek

YUKEN

WIKAI

Klemsan

:hager

Ziegler

atos
the Italian electrohydraulics

Rexroth
Bosch Group

Schneider
Electric



NORGREN

MINDMAN PNEUMATIC

HAFNER
Pneumatics

CAMOZZI

AIR LIFT

ASCO
numatics

REGINA
CHAIN
PERFORMANCE IN MOTION

SIEMENS

317

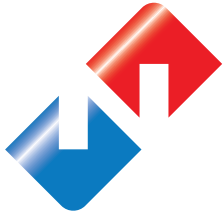
POLINE STEEL

SHPI

CONTACT FOR



+971 56 399 2228
+971 55 592 1122



D-PL-21037-01-00

النهال للتجارة العامة ذ.م.م **al nihal gen. tr. llc**

P.O. BOX: 83261 | SHARJAH | UNITED ARAB EMIRATES

TEL : +971 6 5344434 | FAX : +971 6 5345511

sales@alnihal.com | info@alnihal.com | www.alnihal.com

U.A.E | GERMANY | INDIA | OMAN